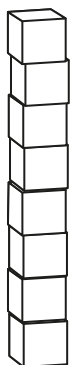
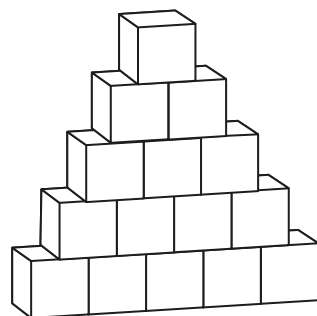


A **structure** is something that is built to do a job.

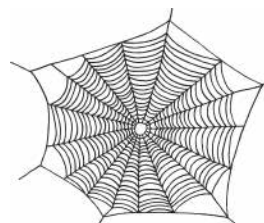
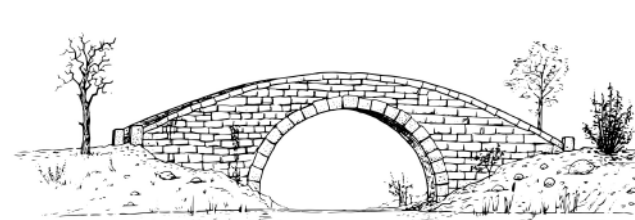


Structures with a **narrow** base are **unstable**.

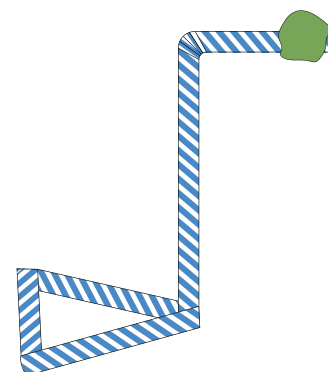


Structures with a **wide** base are more **stable**.

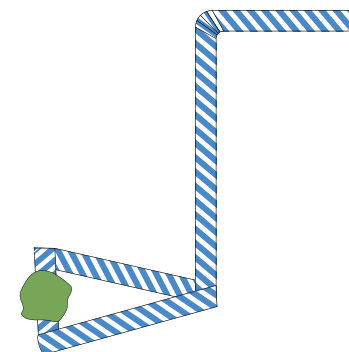
Human and animal structures:



better	Nicer, easier to use or lasts longer.
compare	To say how things are the same or different.
design	To make, draw or write plans for something.
explain	Tell someone about something clearly.
freestanding	Can stand up on its own.
product	Something that people make to sell or use.
stable	Not likely to topple over.
user	The person that something is made for.
worse	Less nice, harder to use or breaks easily.



Putting extra weight at the **top** makes the structure **unstable**.



Putting extra weight at the **bottom** makes the structure more **stable**.