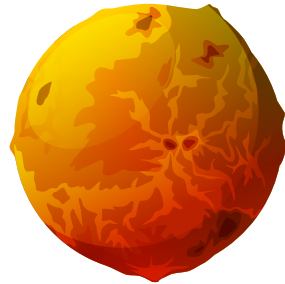


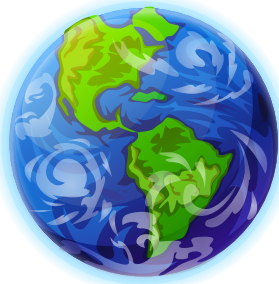
Diameters of celestial bodies



Mercury has a relative diameter of 38 centimetres.



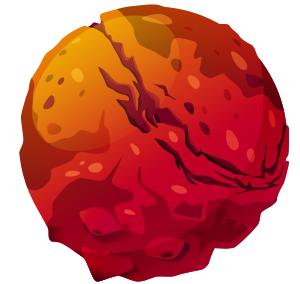
Venus has a relative diameter of 95 centimetres.



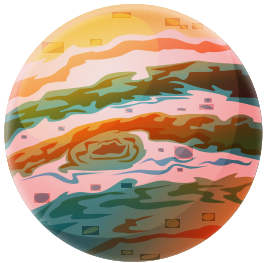
Earth has a relative diameter of 1 metre.



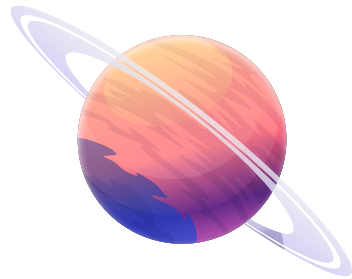
The Moon has a relative diameter of 27 centimetres.



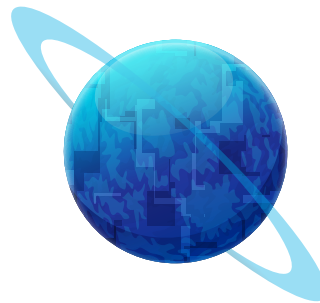
Mars has a relative diameter of 53 centimetres.



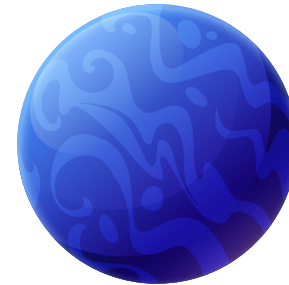
Jupiter has a relative diameter of 11.21 metres.



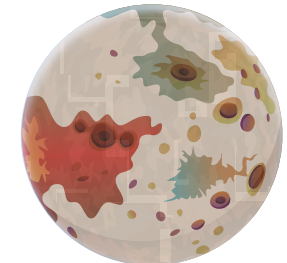
Saturn has a relative diameter of 9.45 metres.



Uranus has a relative diameter of 4.01 metres.



Neptune has a relative diameter of 3.88 metres.



Pluto has a relative diameter of 19 centimetres.