

Date:

Name:

The human digestive system

Name

Function

Part of the model

Name

Function

Part of the model

Name

Function

Part of the model

Name

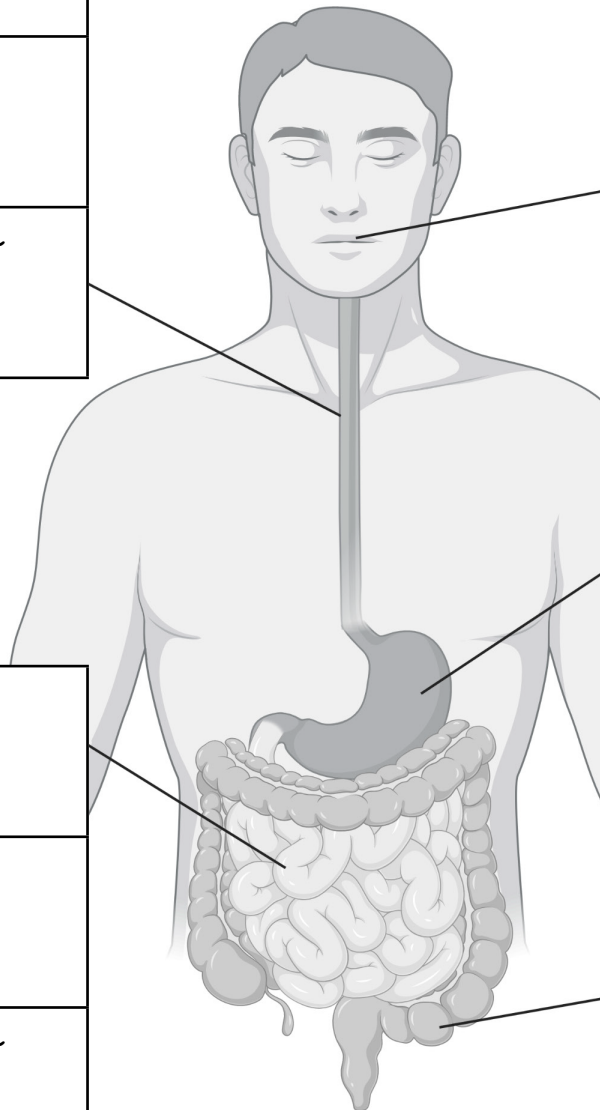
Function

Part of the model

Name

Function

Part of the model



Date:

Name:

The human digestive system

Name	Function	Part of the model
small intestine	Absorbs water into the blood.	Masher crushing food.
stomach	Adds acid to break up food.	Using a sponge to soak up water.
oesophagus	Moves food to the stomach.	Scooping food into a funnel.
mouth	Absorbs useful nutrients into the blood.	Tights with small holes to let food through.
large intestine	Softens and breaks up food.	Plastic bag with juices added.

Which part of the model worked the best and why?
