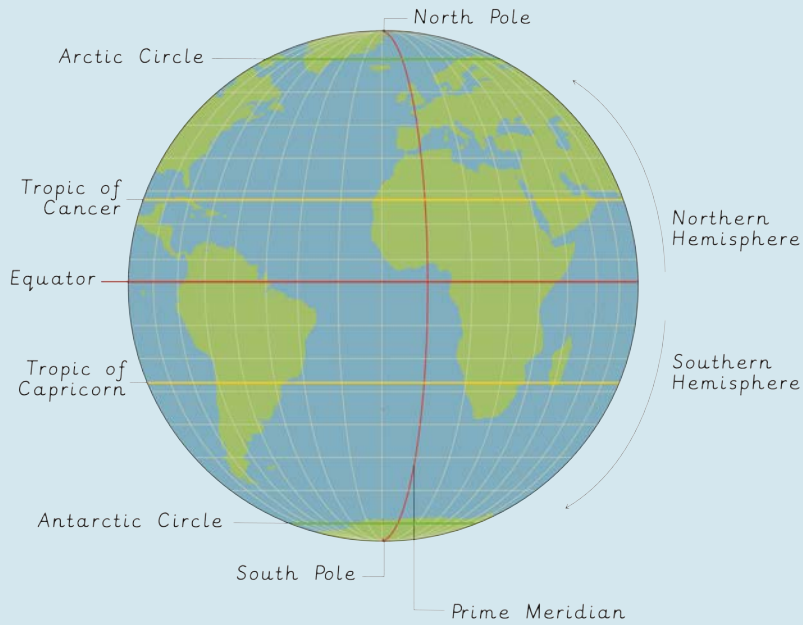
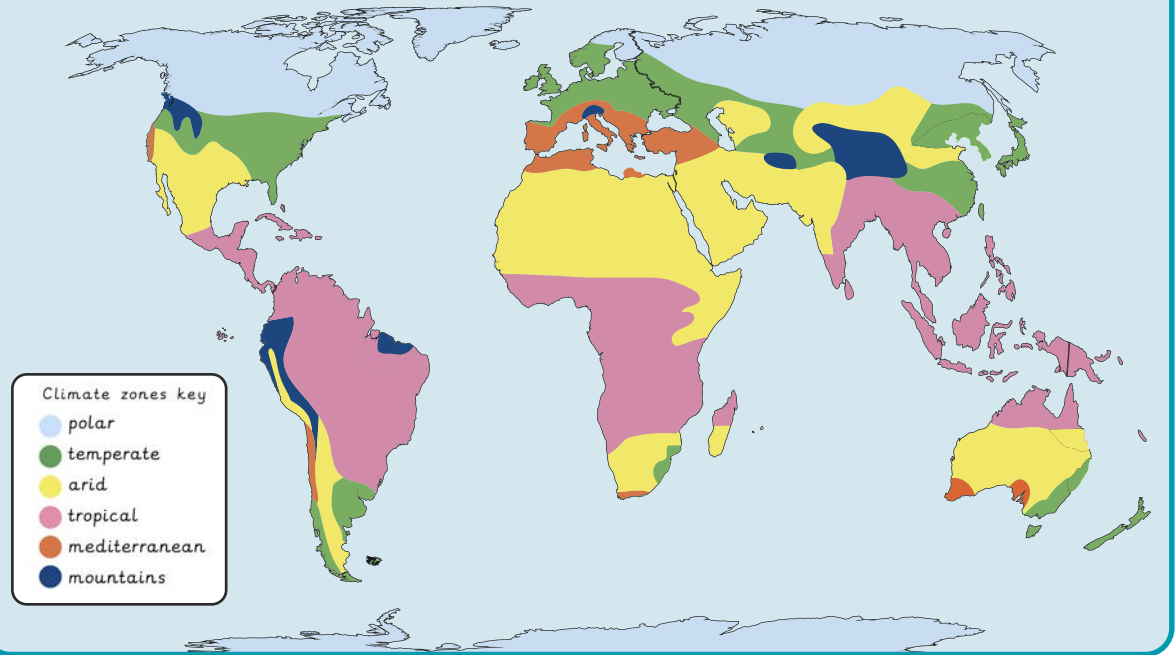


Who lives in Antarctica?

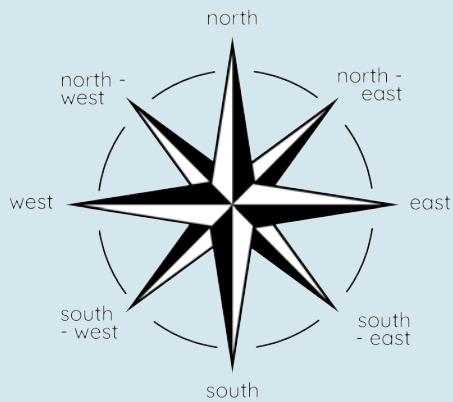
Lines of latitude and longitude



Climate zone map



Compass points

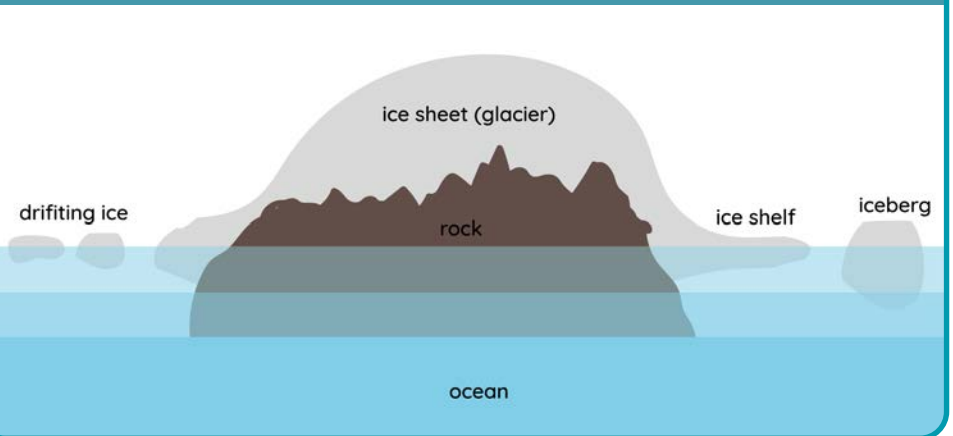


Who lives in Antarctica?



Nobody permanently. However, tourists and researchers do visit.

Physical features of Antarctica

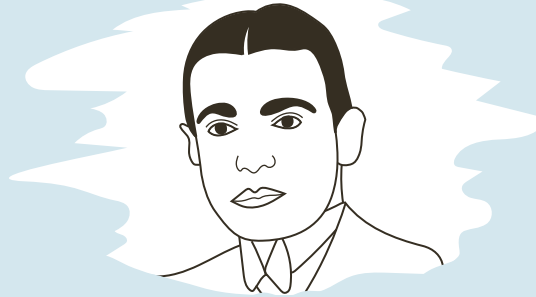


Who lives in Antarctica?



Antarctica is located at the southernmost point on the globe. It experiences extreme blizzards and snowstorms, has many mountain ranges and even an active volcano.

Ernest Shackleton



An explorer who wanted to be the first man to reach the South Pole in Antarctica. He never made it there but is famous for bringing 28 men back to the UK alive after his expedition to Antarctica went wrong and his boat sank.

The Antarctic Treaty



A written agreement signed by 47 countries so far, promising to keep Antarctica a peaceful place and to protect its environment.

lines of latitude	Invisible horizontal lines mapped on our globe to show how far north or south a place is from the Equator.
lines of longitude	Invisible vertical lines mapped on our globe to show how far east or west a place is from the Prime Meridian.
hemisphere	One half of the Earth.
climate	The long-term weather conditions in a specific region.
climate zone	Areas of the world grouped together that have a similar climate.
compass points	North, east, south, west, north-east, south-east, south-west, north-west
direction	An imaginary line showing the way someone or something is moving.
treaty	A formal, written agreement between two places.
ice shelf	A thin layer of ice extending off a glacier into the sea.
ice sheet	A layer of ice covering the land for a long period of time, also known as a glacier.
drifting ice	Thin, floating pieces of ice not attached to a glacier.
iceberg	Large chunks of floating ice that break off a glacier.