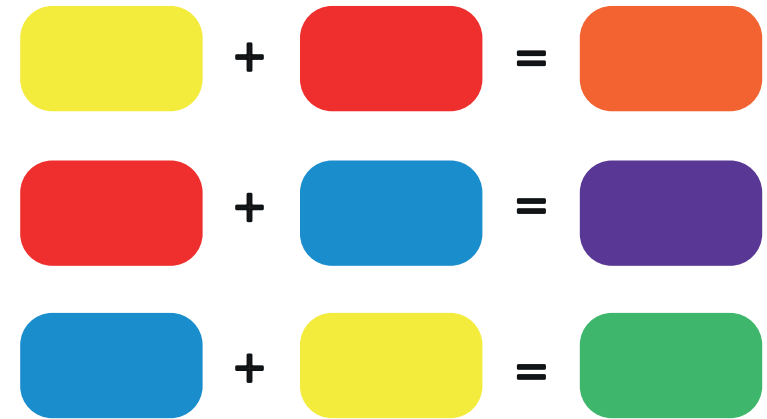


Sculpture

| | |
|-------------------|---|
| Composition | The placement or arrangement of visual elements in a work of art. |
| Geometric pattern | A pattern formed of geometric shapes such as circles, rectangles, squares and triangles. |
| Optical effect | The arrangement of shapes, colours and patterns to create images that look as if they are moving or blurring. |
| Sketch | A quick, light drawing or painting without detail. |
| Wax resist | Drawing with wax then painting over it. The areas covered in wax will not allow the paint to settle. |
| Upcycle | To repurpose old items or junk into something of more value. For example a product or art work. |
| Recycle | To reuse things which would have been thrown away. |
| Contrast (art) | Very different to, or the opposite of. |

Key facts

The primary colours are red, blue and yellow.



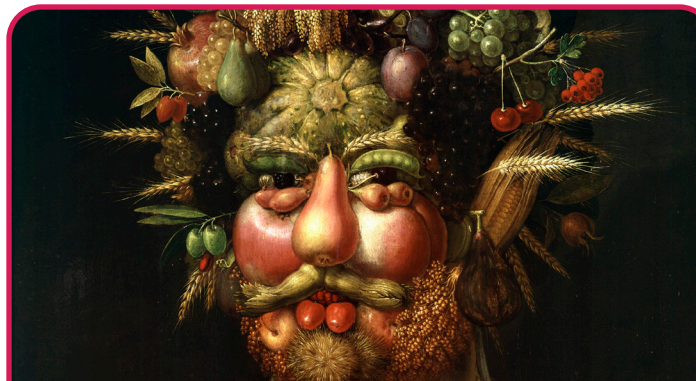
Secondary colours are mixed from the primary colours and are orange, purple and green.

Artists' work looked at:



El Anatsui

An artist and sculptor from Ghana.



Giuseppe Arcimboldo

An Italian painter best known for creating imaginative portrait heads made of objects such as fruits, vegetables and flowers.



Sam Francis

An American painter and printmaker.

Sokari Douglas Camp

A sculptor who works primarily with steel. Her sculptures refer to her Nigerian heritage and international issues.